

MAY 2024

THE CAN-AM CHRONICLE

C-Traq

Your new tracking device, and ultimate solution for reliable, always-connect tracking.

Take a look at our GeoTab news

Check out our latest update summary for MyGeoTab

TABLE OF CONTENTS



MAY OFFERS

| | |
|----------------------|----|
| PrePass | 02 |
| C-Traq asset tracker | 03 |
| Whip Around | 04 |

CUSTOMER INFO

| | |
|-------------------|----|
| Our new customers | 05 |
|-------------------|----|

CAN-AM NEWS

| | |
|-------------------|----|
| News of the month | 06 |
|-------------------|----|

MEET OUR TEAM

| | |
|---------------|----|
| Bina Gonzague | 07 |
|---------------|----|

OUR CEO

| | |
|-------------------------|----|
| A letter from the owner | 08 |
|-------------------------|----|

MAY OFFER



WEIGHT STATION BYPASSING AND TOLLING SERVICES

The PrePass platform provides bypassing, tolling, safety score and tolling software, and driver safety ALERTS in one solution

Prepass safety **ALERTS** provide drivers with proactive visual and an audible notifications

SAVE with a free month!

ASK YOUR AGENT ABOUT PREPASS!



SAVE

Time, fuel, and wear and tear



IMPROVE SAFETY SCORES

With included INFORM safety software



REDUCE COSTS

With toll volume discounts

MAY OFFER

C-TRAQ ASSET TRACKER

PROACTIVE, NOT REACTIVE!



CAN-AM Telematics offers personalized and proactive customer service that identifies and resolves issues before they get worse.

The new C-Traq **finds assets for years**, has a **simple and easy-to-hide design**, and **keeps your assets connected** regardless of location or reception.

FULL VIEW OF YOUR FLEET:

Maximize your assets and keep them safe from theft or loss by tracking them anywhere, anytime.

BUIL TO LAST: C-TRAQ is built from durable materials so it can stay attached for a long time.

KEY FEATURES



24/7/365, U.S.-based technical support



Intelligent motion-based tracking



Compact design form



Theft recovery mode



GPS & GNN, Wi-Fi fallback for location



HARDWARE \$95
MONTHLY SERVICE FROM \$12

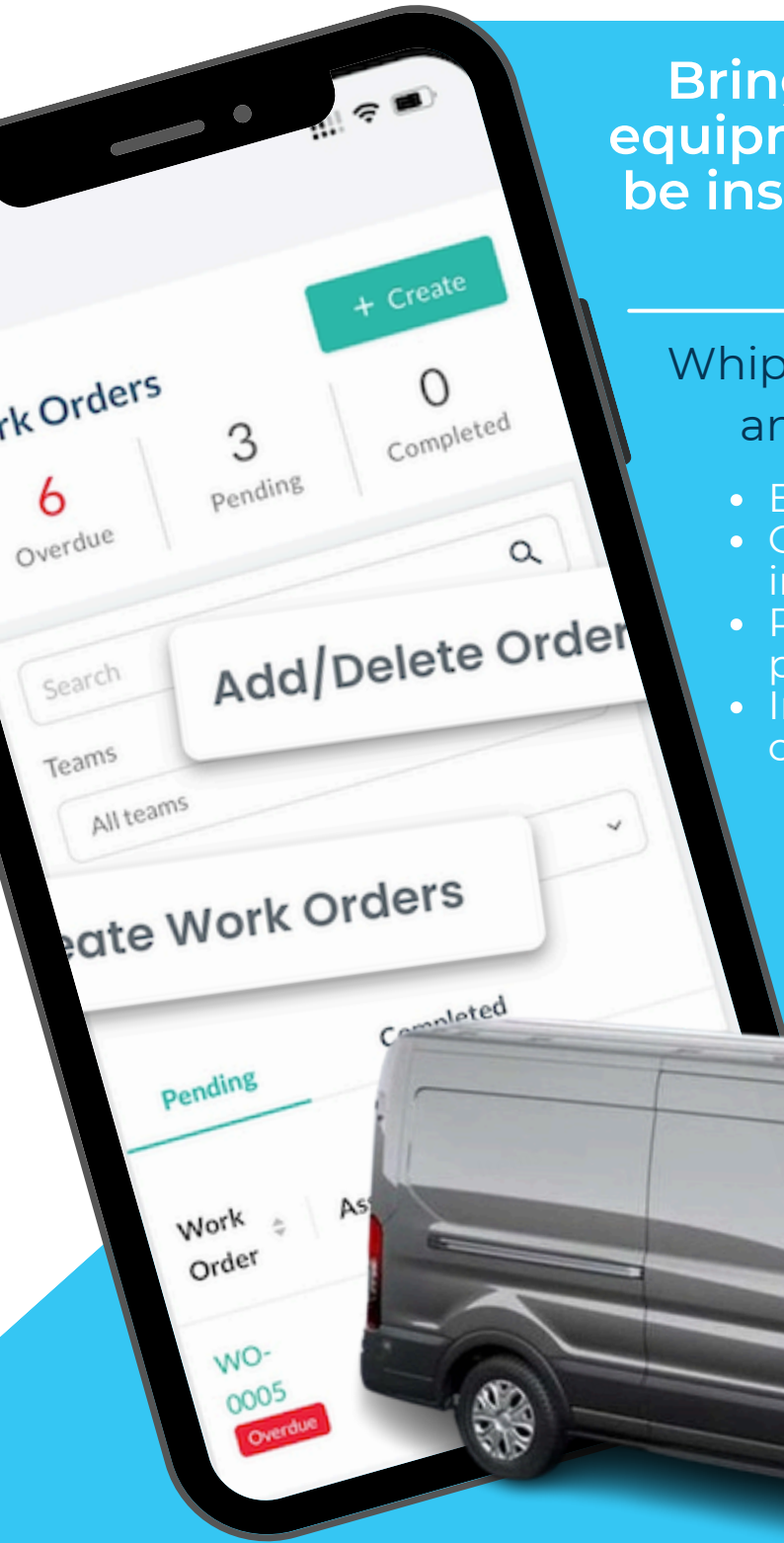
UNLIMITED ASSETS, ONE LOW FIXED RATE

Bring **ALL** of your assets and equipment onto Whip Around to be inspected and maintained at one low fixed price

Whip Around gives you full control and visibility over your fleet:

- Easy-to-use software & app
- Custom digital vehicle/assets inspections
- Powerful preventative maintenance programs
- Improved safety & compliance outcomes

**Contact us about
this exclusive offer!**



OUR NEW CUSTOMERS



WELCOME to the family!



TAKE A LOOK AT OUR NEWEST MEMBER

 netradyne | driver.i



Driver.i ® Safety Camera System

“
*Conservatively, we've saved
over \$100,000
with just five incidents. So,
cost-savings and ROI—it's
big. As a secondary impact,
our unsafe driving basic
went down
on our CSA scores.*

ADAM LANG, CDS, CHIEF RISK
OFFICER, HALVOR LINES

Positively, the most advanced fleet safety solution!

- With cutting-edge technologies in AI, machine learning, and edge computing to create a new safe driving standard for commercial vehicles.
- Reducing driving incidents, protecting against false claims, and empowering drivers by providing awareness of risky driving behavior and rewarding safe driver decision-making.

Get the complete picture

With the highest-definition camera on the market, Driver.i **offers clear visibility.** The highly accurate AI can capture and analyze 100% of drive time **providing a more complete safety picture,** removing the guesswork for fleet managers, and revealing the true cause of driving events.

OUR LATEST UPDATE SUMMARY FOR MYGEOTAB!



For more information, explore these resources:



GEOTAB SDK

Learn about integrating ChargeEvents into your application.



API ADAPTER

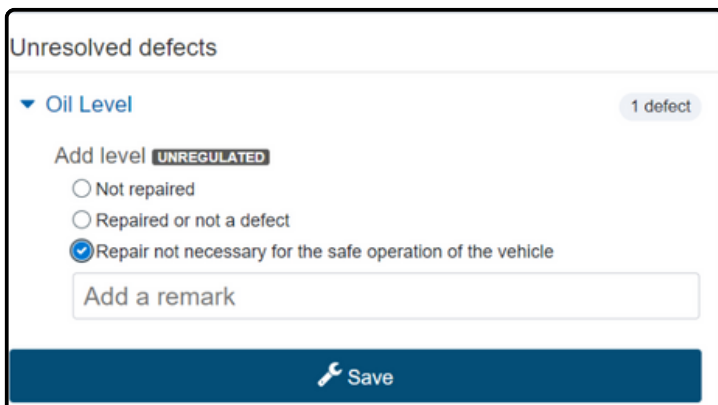
Understand how to stream data from **MyGeotab** database to an external one, with ChargeEvents support.



NEW IN GEOTAB DRIVE

Stay updated with the **latest enhancements** in Geotab Drive.

AUTOMATIC CARRYOVER OF UNRESOLVED DEFECTS IN ASSET INSPECTIONS



- Minor defects, like a slightly cracked mirror, can now be marked as **"Repair not necessary"** during Asset Inspections.
- These unresolved defects will **automatically carry over** to the next inspection for decision-making
- Drivers no longer **need to manually re-add defects until repair**, ensuring visibility and relieving Fleet Managers from tracking missing defects.



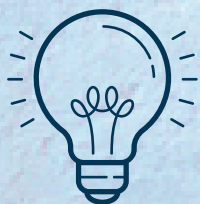
MEET

BINA GONZAGUE

Regional Sales Manager

Bina is a dynamic professional hailing from the picturesque Caribbean gem of St. Lucia. As the newly appointed **Regional Sales Manager**, Bina brings a wealth of experience and enthusiasm to her role

She thrives on challenges, viewing them as opportunities for growth and innovation. **Her favorite aspect of sales** lies in the ultimate satisfaction of the customer, knowing she has played a pivotal role in exceeding their expectations.



FUN FACT ABOUT BINA

She is a culinary aficionado and delights in the creation of exquisite dishes. When she's not crafting culinary delights, you can find her basking in the sun on the beach.

A LETTER FROM THE OWNER



As we venture into the new quarter, I am proud to announce the remarkable growth of our company. **Thanks to the unwavering support of customers like you**, Can-Am Telematics has experienced substantial expansion.

Your trust and loyalty have been the cornerstone of our success, and **we remain deeply committed** to exceeding your expectations in every aspect of our business.

In line with our commitment to innovation, I am delighted to introduce our latest product offering: C-TRAQ. This cutting-edge solution **is designed to revolutionize the way you manage your non-powered asset operations**, providing real-time insights, advanced analytics, and unparalleled efficiency.

Furthermore, I am pleased to share updates regarding our partnership with Geotab. **Together, we are dedicated to delivering innovative solutions** that drive tangible value and foster long-term success for your business.

Thank you for choosing Can-Am Telematics as your trusted partner. Here's to a successful quarter filled with growth, innovation, and prosperity!



Johan Rahardjo

President & CEO